

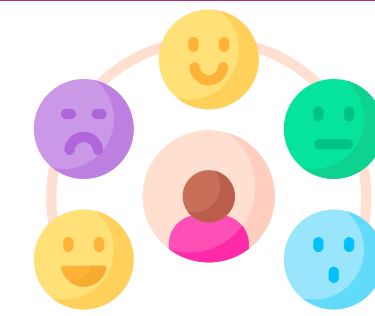
QI 1272 Improving the Therapeutic Environments at Janet Shaw Learning Disabilities & Autism Forensic Unit, Brooklands Hospital

Item Type	Internal Poster
Authors	Gray, Rebecca;Collins, Natalie;Supported by the Quality Improvement Team
Citation	Gray, Rebecca; Collins, Natalie. QI 1272 Improving the Therapeutic Environments at Janet Shaw Learning Disabilities & Autism Forensic Unit, Brooklands Hospital. Coventry and Warwickshire Partnership NHS Trust, 2025.
Publisher	Coventry and Warwickshire Partnership NHS Trust
Rights	Attribution-NonCommercial-NoDerivs 2.0 UK: England & Wales
Download date	2026-07-07 16:08:05
Item License	http://creativecommons.org/licenses/by-nc-nd/2.0/uk/
Link to Item	https://westmid.openrepository.com/handle/20.500.14200/9398

QI-1272 Improving the Therapeutic Environments at Janet Shaw Learning Disabilities & Autism Forensic Unit, Brooklands Hospital

Project Lead: Rebecca Gray, Clinical Lead for Male Medium Secure Services & Natalie Collins, HCA

Nov 2025



Project Aim: To reduce the overall incident rate at Janet Shaw Clinic by improving the therapeutic environment and activities available.

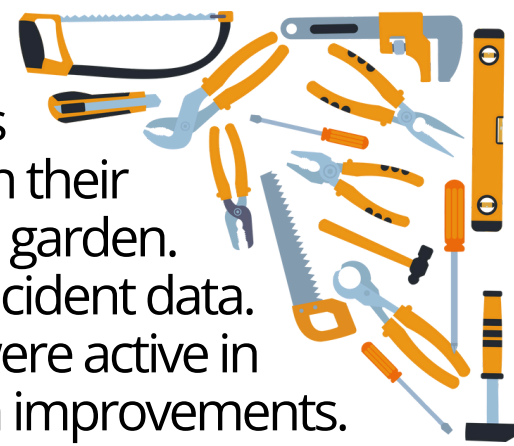
Summary:

When first admitted, patients on Janet Shaw Clinic (JSC) do not have leave granted. Due to the section patients are on, this can also take some time to be approved. This means that they are, for a period, not able to access therapeutic activities on the wider Brooklands site. Facilities at JSC are limited, with a small craft room, only able to house 1 patient; which restricts activities for other patients and often leads to incidents due to boredom. Outside space at JSC is ample; prime for gardening that would engage multiple patients. Currently, assault patient to staff (physical and non-physical) is the most common incident cause.



QI Tools Used:

Co-Collaboration - Patients were involved in deciding on their activities and growing in the garden.
SPC Charts - To measure incident data.
Staff Engagement - Staff were active in fundraising and engaging in improvements.



Measures:

- Weekly incident data recorded and reported on Janet Shaw Clinic, Brooklands.
- Improved atmosphere and environment for patients, staff and visitors to JSC.
- Patient & staff happiness.



Project Timeline:

January 2024 Project registered; current activities available on JSC are limited and dated which **affect incidents** on the unit.

March 2024 Met with Charitable Funds for funding opportunities; staff skydiving fundraiser decided. Estates also engaged for solutions.

December 2024 '12 Days of Christmas' activities initiated by staff such as crafting, baking and personalised Christmas Eve 'goodies'.

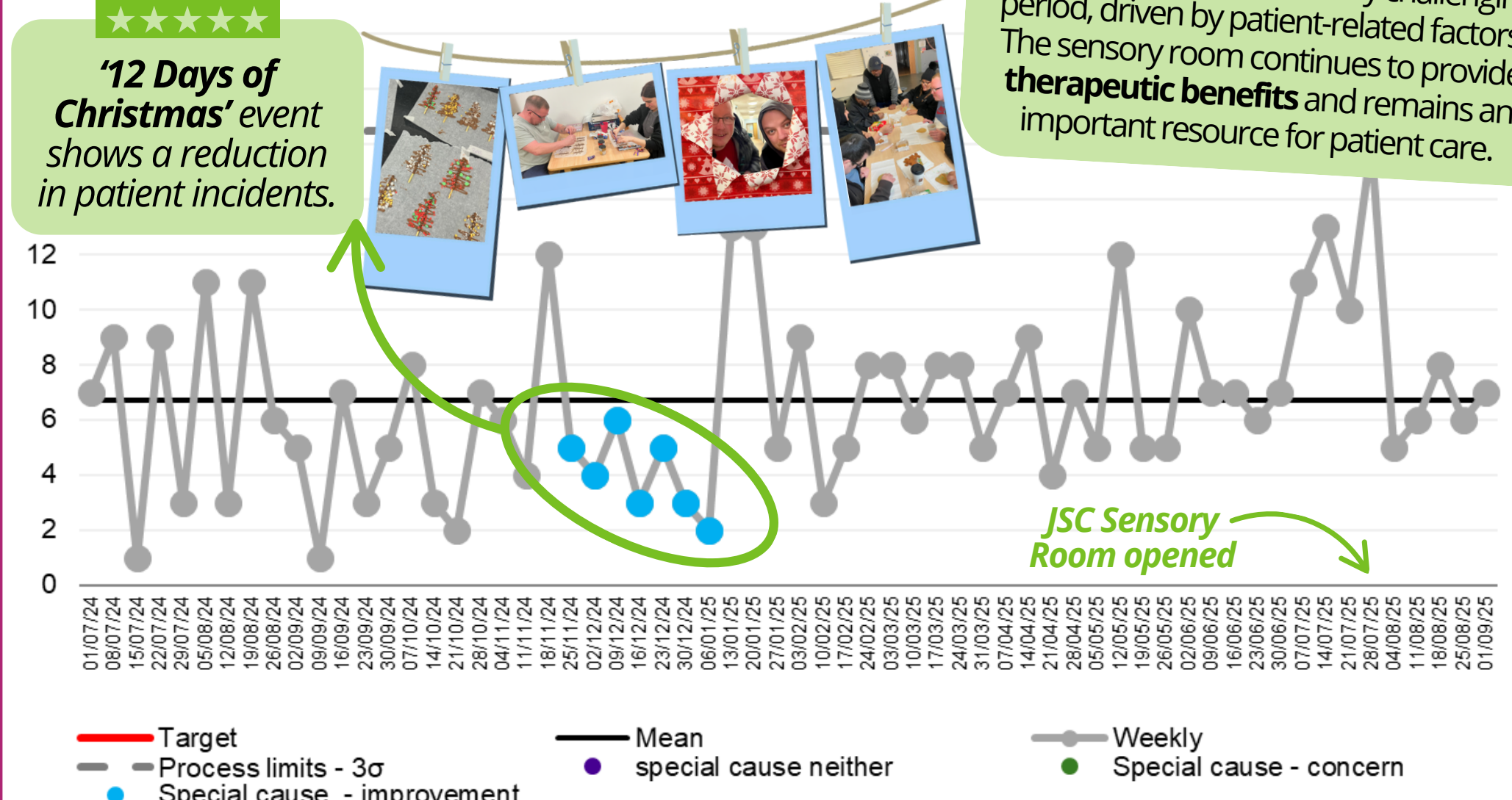
January 2025 Work starts on renovating the pre-existing music room into a multi-sensory room for patients to book time in to.

May 2025 Fundraising money used for sensory room equipment & furniture. Gardening tools donated by locals after social media post.

June 2025 The (literal) fruits (& vegetables!) of patient's labour in the garden pay off; food used to engage patients in cooking.

Benefits & Outcomes:

Data was collected on reported incidents throughout the project length to demonstrate improvements following specific actions taken to improve the therapeutic environment.



★★★★★
While incident numbers on the ward have not decreased, this trend is not linked to the opening of the sensory room. It reflects a particularly challenging period, driven by patient-related factors. The sensory room continues to provide **therapeutic benefits** and remains an important resource for patient care.

Opening of the Sensory Room:



August 2025



JSC Sensory Room

The grand opening with ribbon cutting and tea & cake for patients, staff and visitors!

Next Steps:

- Continue collecting data to ensure the sustainability.
- Share the impact of the project with the wider Brooklands site and wards.
- Continue to engage pts in activities.
- Collect the garden harvest!

